

FIND YOUR PERFECT FIT *Home Styles at Laurel Lake*





# Find the perfect home to fit *your* lifestyle.

Welcome to Laurel Lake, where full-service retirement living is worry-free. With over 20 attractive apartment and villa home styles from which to choose, we're certain to have the right design to fit your active lifestyle.

In this portfolio, you'll find just a sampling of the many different home sizes and styles available at Laurel Lake. Most can be customized or expanded to suit your individual taste. All come with a complete package of services and amenities, plus the option of a lifelong Type "A" Life Care contract.

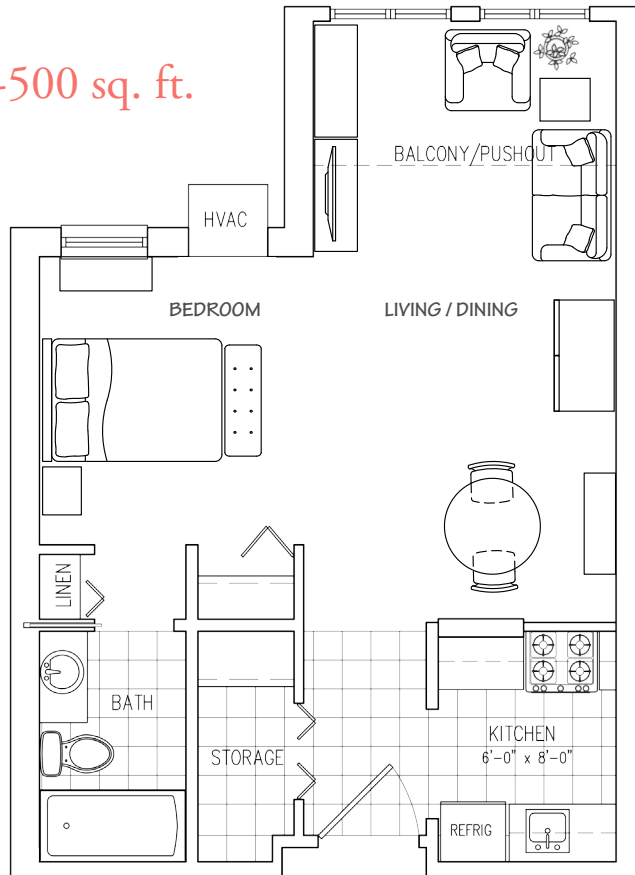
Entertaining or relaxing will be easy in your spacious, inviting villa or apartment at Laurel Lake. Each home has a private balcony or patio, a well-equipped kitchen with Energy Star® appliances, generous closet and storage space, cable television and optional high-speed Internet access, and more. And since life here is maintenance-free, you'll be able to spend your time living, not fussing with house repairs or tedious yard work.

Seeing is believing! To explore the full array of available home styles at Laurel Lake, call 1-866-650-2100 to schedule a tour today.



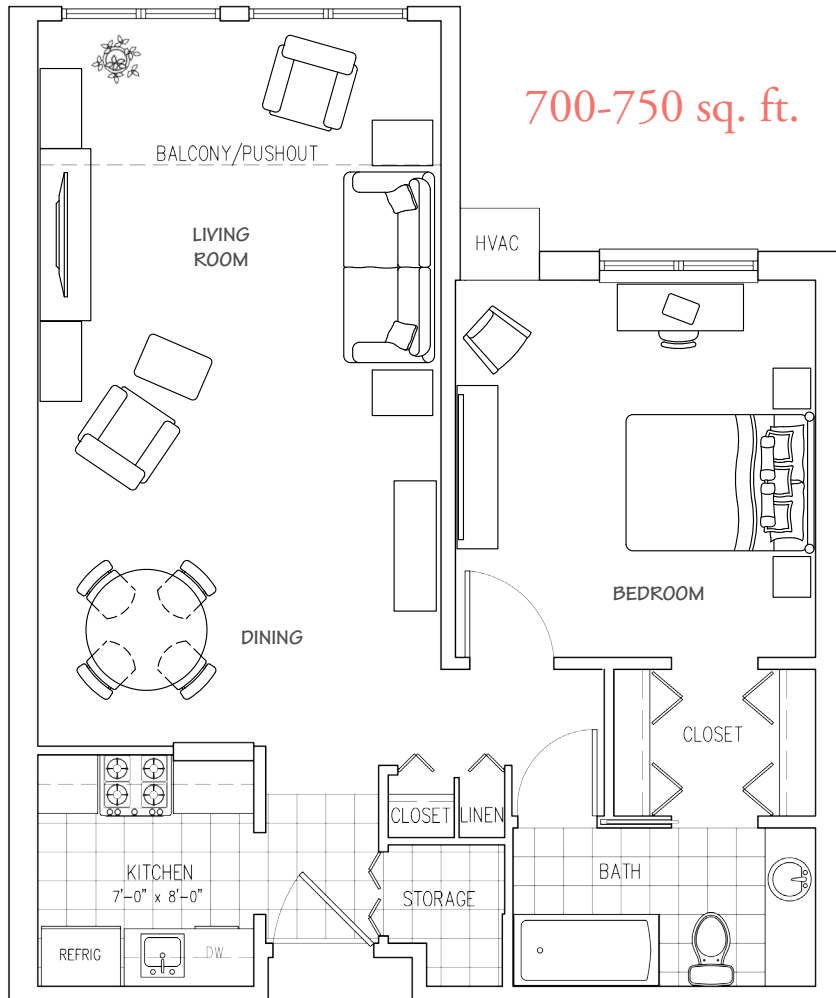
# STUDIO APARTMENT

450-500 sq. ft.



This “best value” compact home design features a fully equipped kitchen and bathroom, ample storage space, private balcony or patio, and access to the full complement of Laurel Lake services and amenities.

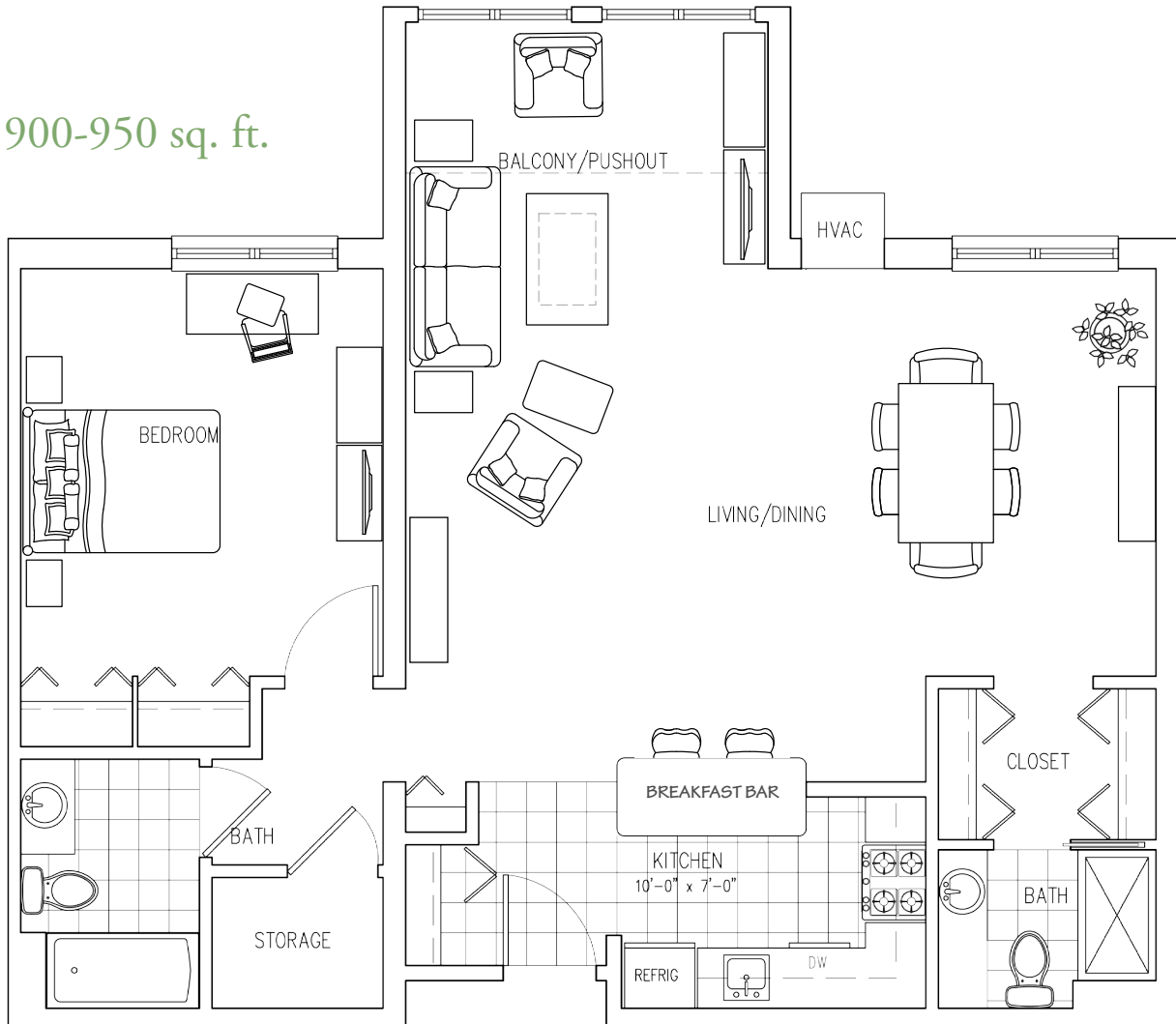
# ONE-BEDROOM CLASSIC



Our one-bedroom designs offer spacious living areas and bedrooms, well-equipped kitchens, large bathrooms, and an abundance of closets including a walk-in pantry/storage room. A private patio or balcony provides access to the outdoors, while large windows bring in plenty of natural light.

# GREATROOM APARTMENT

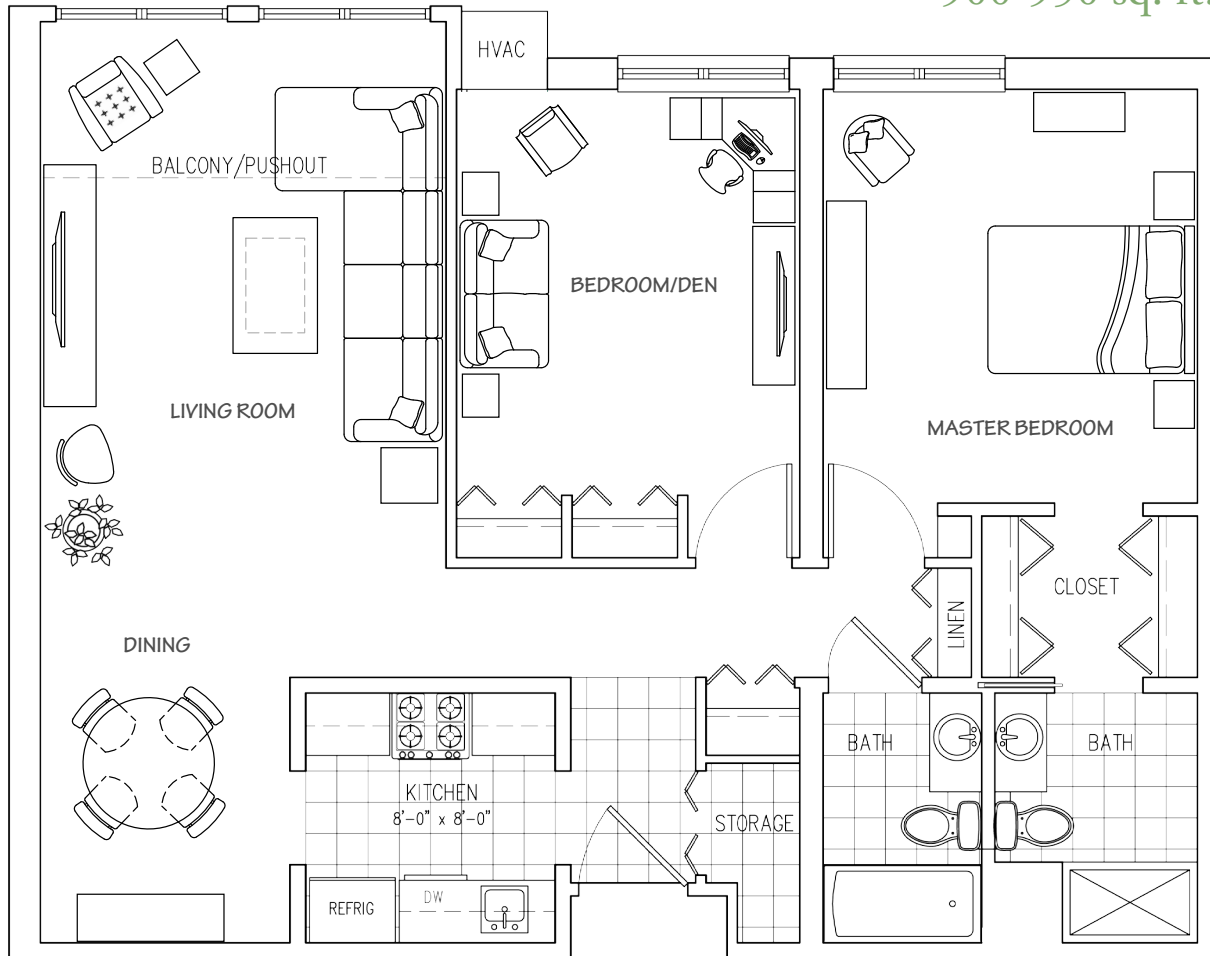
900-950 sq. ft.



The Greatroom has a modern, open floor plan that's ideal for entertaining. A spacious living/dining area, breakfast bar, walk-in closets, large windows, and two bathrooms are features of this popular model.

# TWO-BEDROOM TRADITIONAL

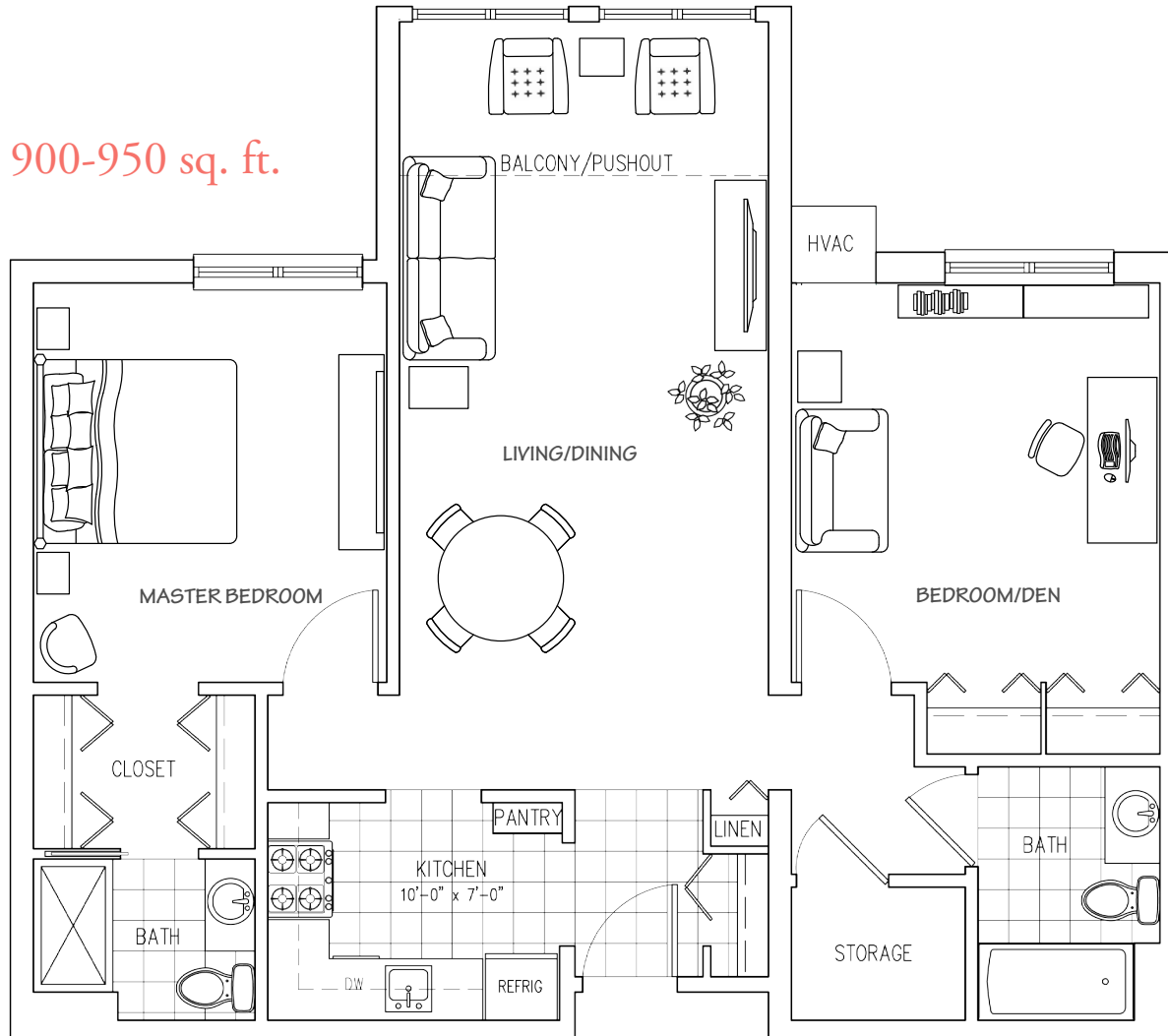
900-950 sq. ft.



The Traditional boasts a large living room with dining alcove, a master bedroom suite with walk-through closet and bathroom, a guest bath and a second bedroom that can also serve as den, office or art studio.

# TWO-BEDROOM CLASSIC

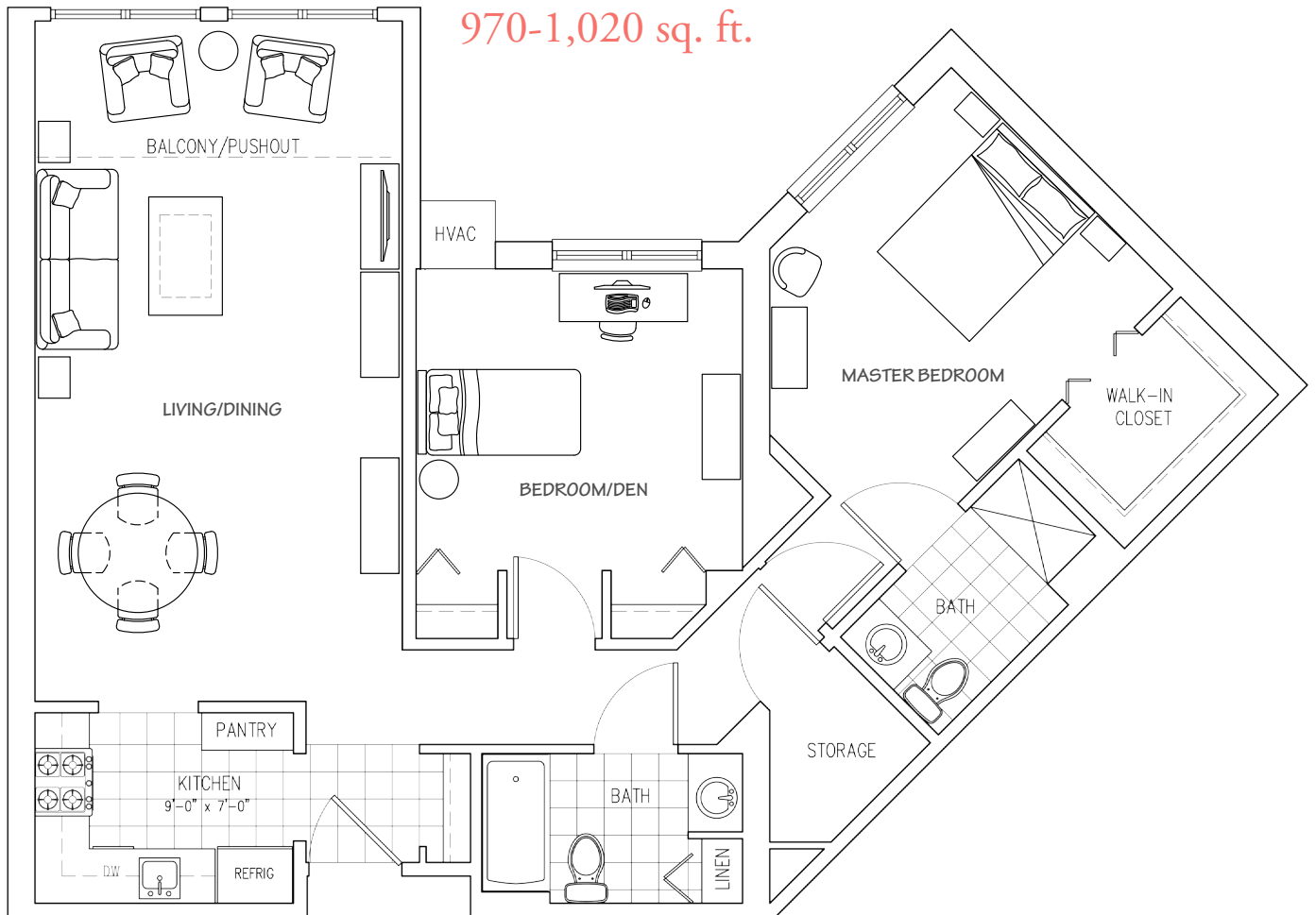
900-950 sq. ft.



In the Classic Two-Bedroom design, two bedroom/bathroom suites are separated by an airy, bright living and dining area. The corner kitchen features a pantry or, in some models, a breakfast bar. An abundance of closet space, including a walk-in storage room, truly sets this unit apart.



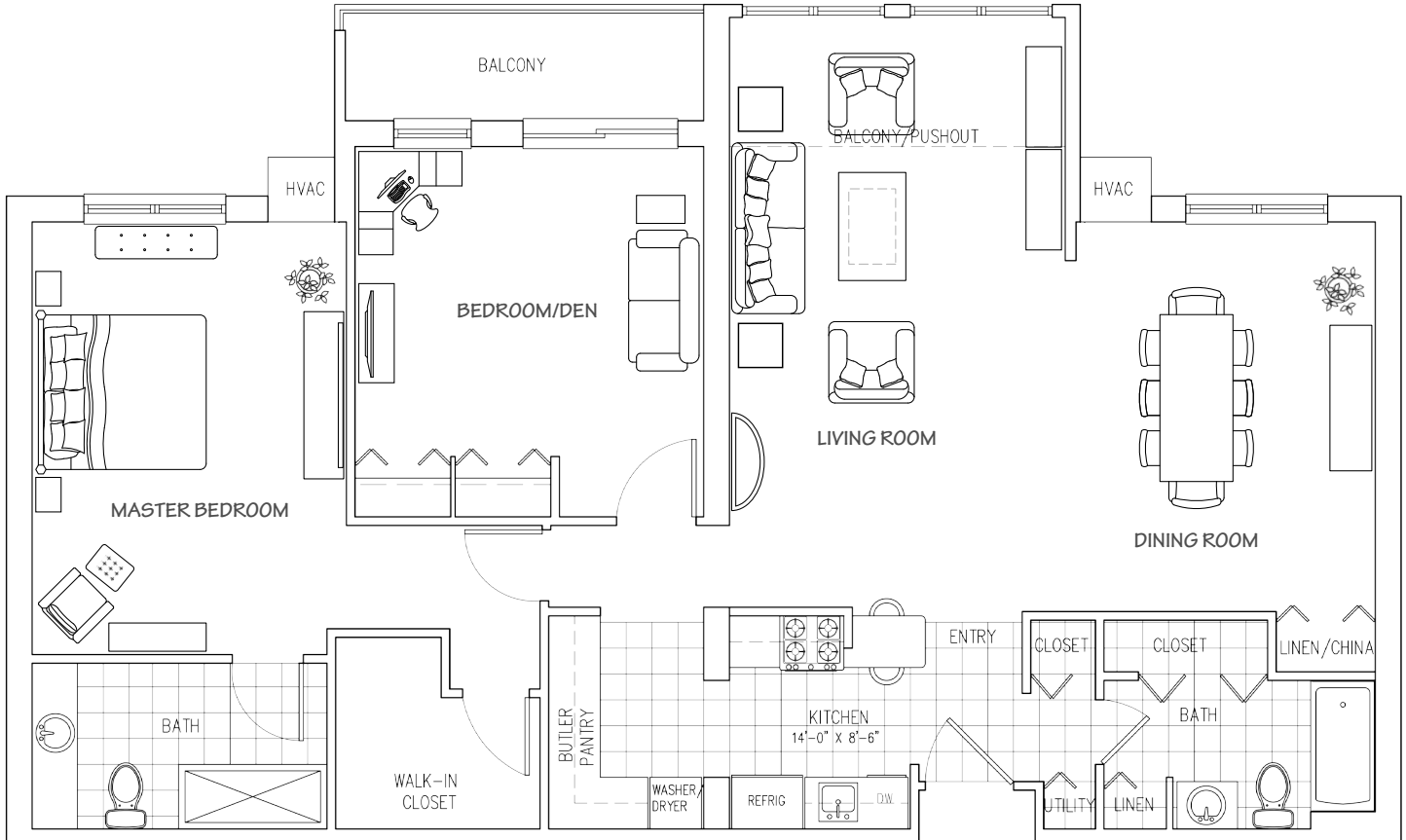
# TWO-BEDROOM CORNER



With its larger footprint and unique character, the two-bedroom Corner appeals to many. A corner kitchen with pantry, the open living/dining area, master suite with walk-in closet, and extra storage room are highlights of this plan.

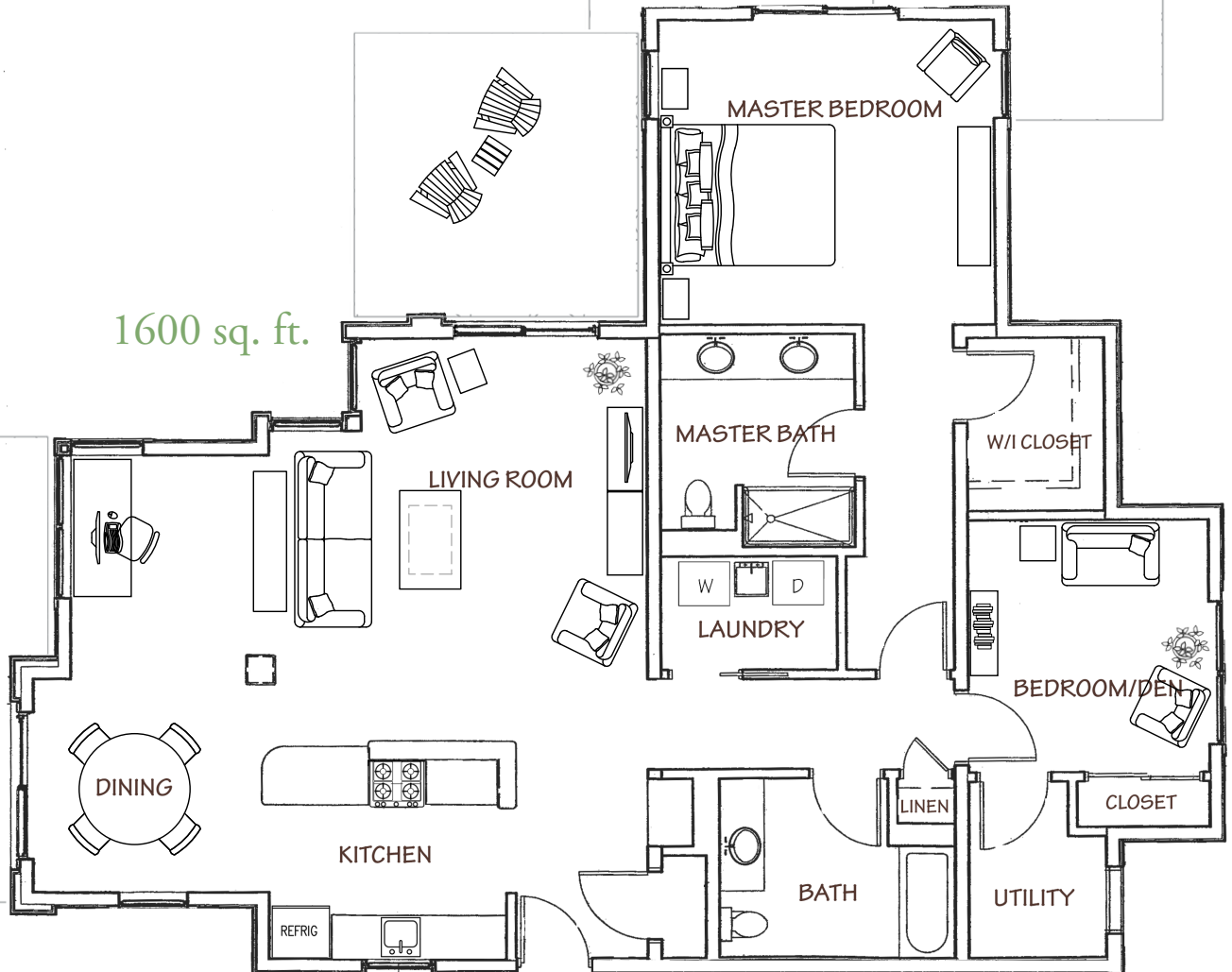
# CONVERSION APARTMENT

1,500-1,700 sq. ft.



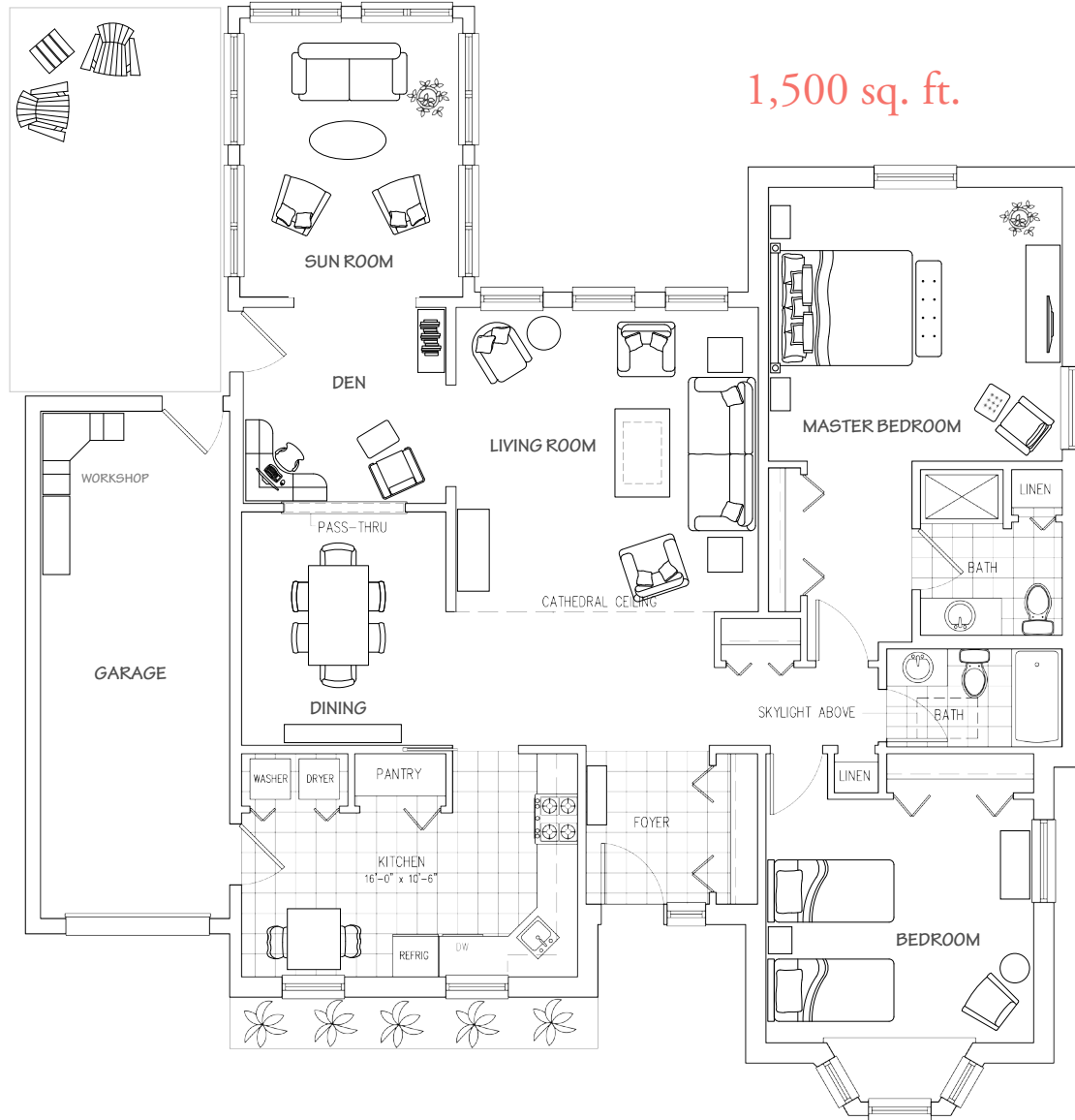
Conversion Apartments at Laurel Lake are custom-designed homes in which two smaller residences have been combined to create a large apartment. Each boasts a spacious, open living/dining area, pantry, laundry room, large master suite with walk-in closet, balconies or patios, and remarkable storage space.

# VISTA APARTMENTS



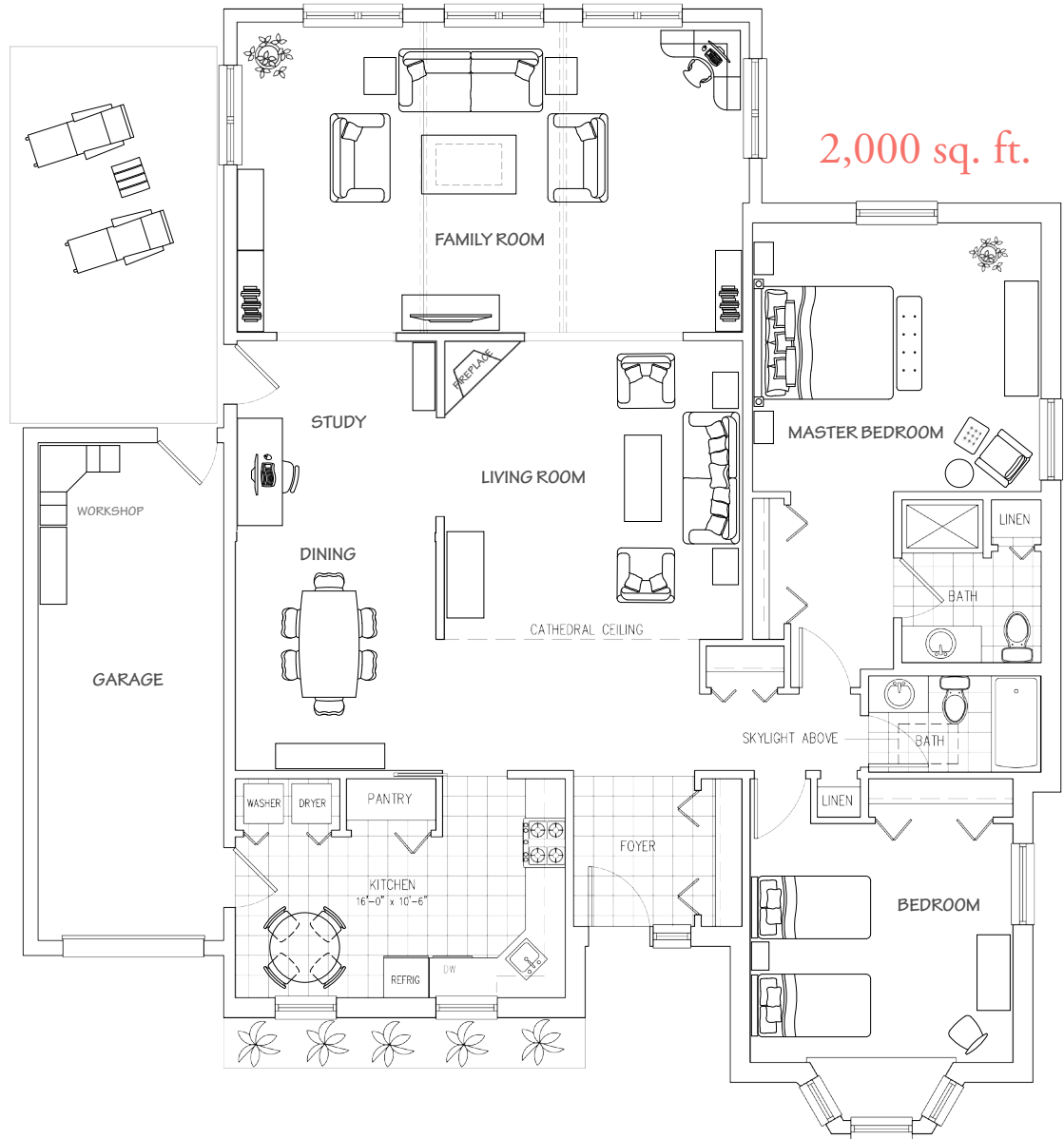
The Vistas at Laurel Lake are modern, open-plan apartments with wrap-around windows on three sides, maximizing views and flooding the home with natural light. Third-floor Vistas have cathedral ceilings. Other highlights: Large kitchens with wine racks and breakfast bars; spacious, open living/dining areas; large master suite with walk-in closets and double sinks; laundry room and ample storage.

# CLASSIC VILLA WITH SUNROOM



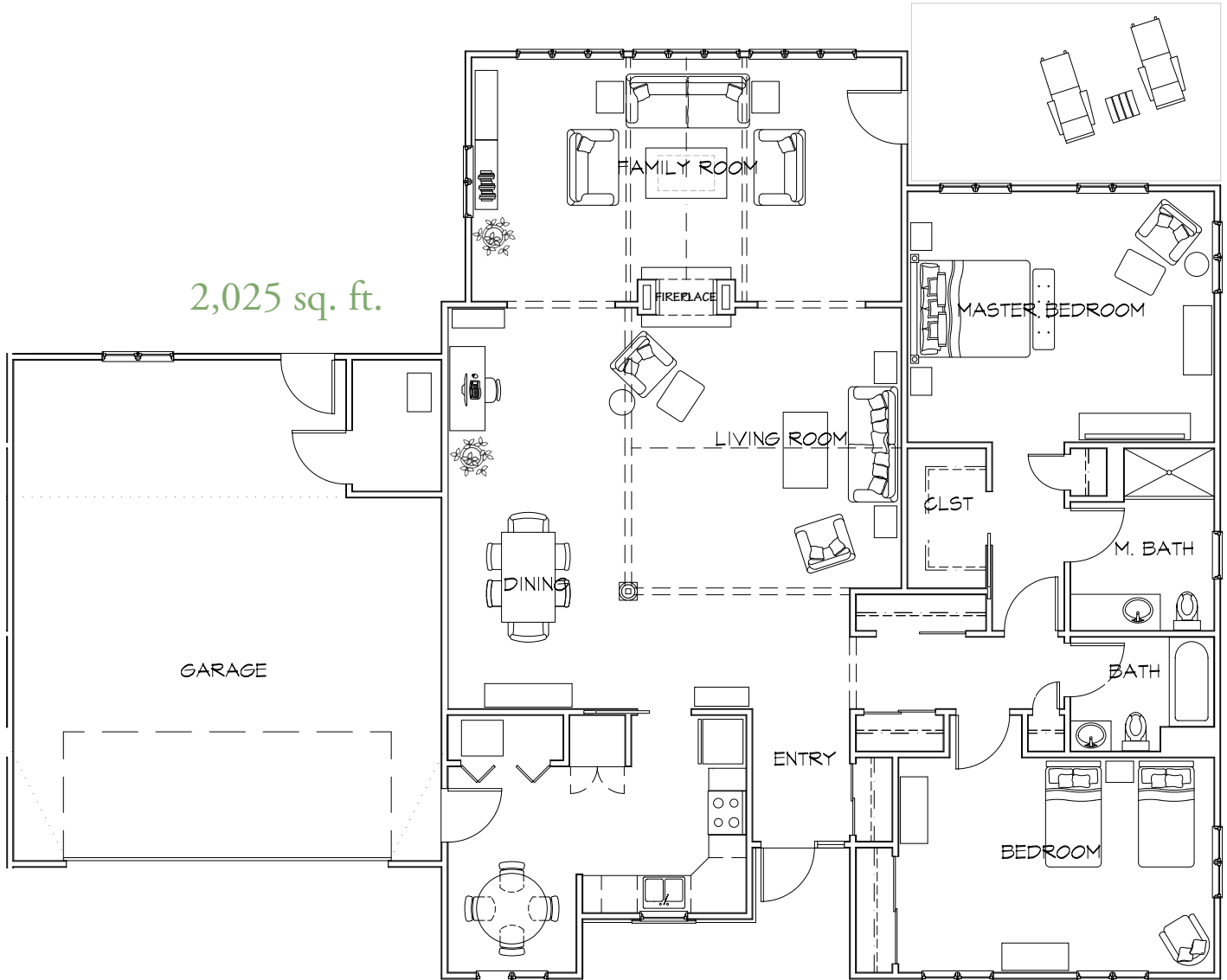
The Villas are New England-style semi-detached homes that come in a variety of shapes and sizes. Each has a large eat-in kitchen, laundry, formal dining room, living room, guest bedroom/bath, large master suite with walk-in closet, patio, and garage.

# CLASSIC VILLA with FAMILY ROOM



Many Villas have been expanded with the addition of dens, sun rooms, family rooms, offices, or two car garages. Some have fireplaces, while others offer more windows with views of woodlands, lakes, and manicured grounds. All have patios and plenty of “backyard” living and gardening space.

# EXPANDED VILLA WITH 2-CAR GARAGE



Laurel Lake's largest residence, the Expanded Villa, features living and family rooms, two-way fireplaces, eat-in kitchens with formal dining room, a spacious master bedroom suite, two-car garage, and more.



## Create a home you'll love!

At Laurel Lake, you don't have to settle for cookie cutter apartments. From paint color choices to room additions, Laurel Lake maintains a flexible approach to home customization.

Add extra style and comfort by allowing our Move Coordinator to guide you through the process of selecting optional custom upgrades—such as paint and wallpaper, cabinetry, granite countertops, ceramic tile, Berber or plush carpeting, hardwood flooring, crown molding and chair rails, premium lighting and more. You may choose to work with our specialists for turn-key professional installation, or bring in your own. To explore the possibilities, give us a call at 1-866-650-2100 today.





LAUREL  
LAKE

200 Laurel Lake Drive, Hudson OH 44236  
[www.laurellake.org](http://www.laurellake.org)